

Science Hill Light Microscopy Facility

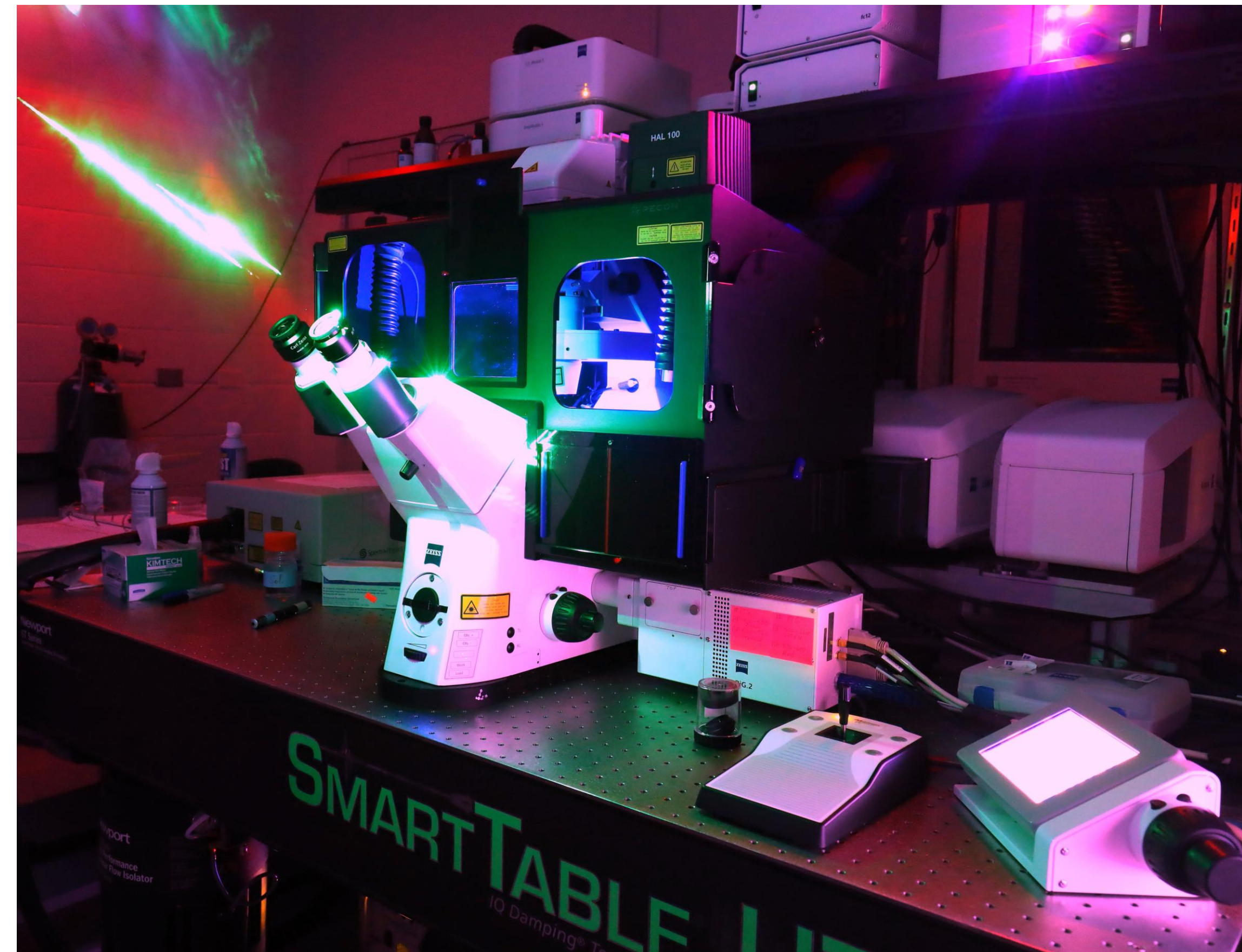
For information on training, use and experimental design, contact: Joseph.Wolenski@yale.edu



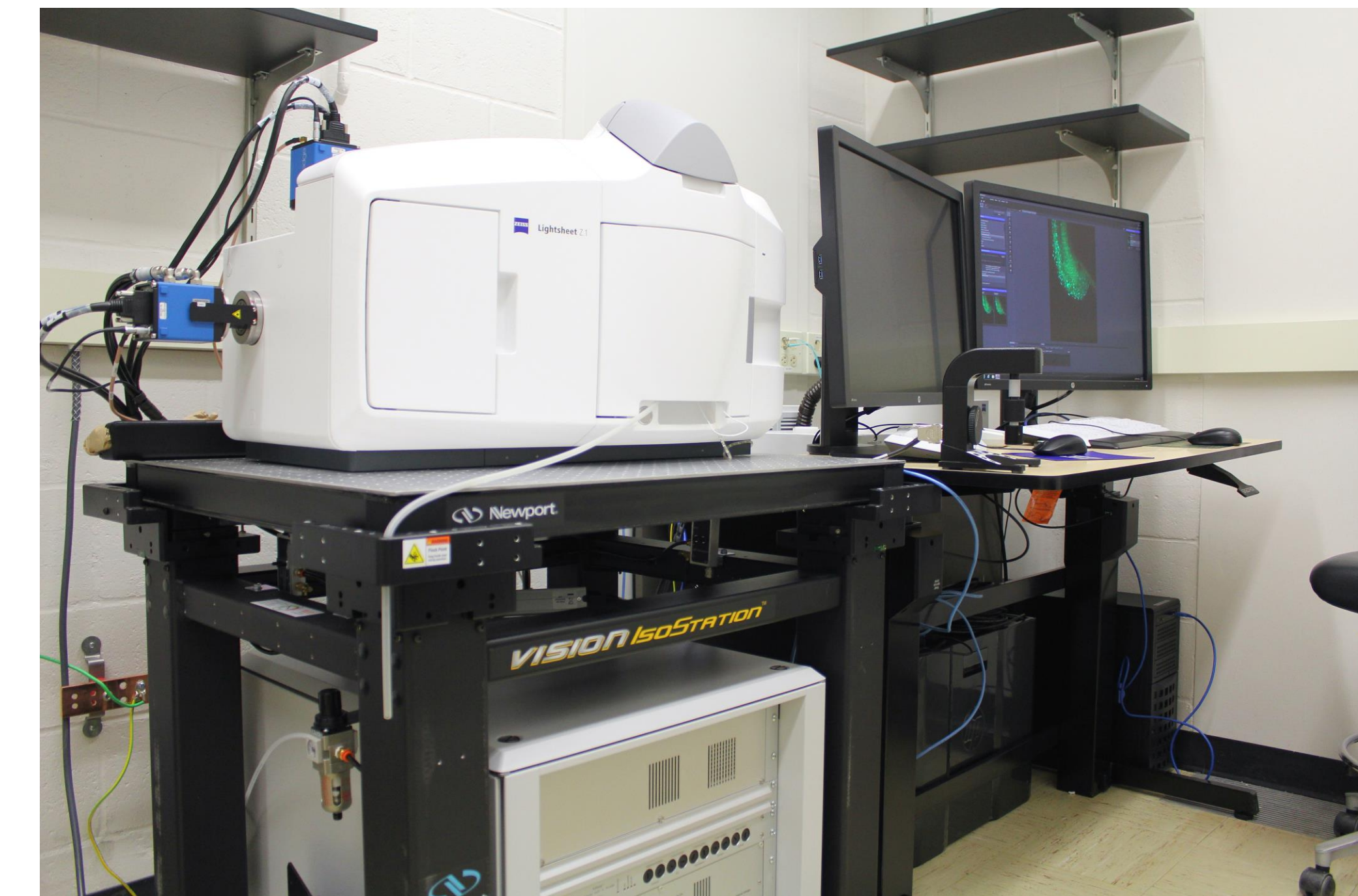
Joe



LSM 880



LSM 880 with Airyscan, NLO and FLIM



Lightsheet Z.1 Microscope



LSM 510 with NLO



LSM 510

LSM locations: future and current

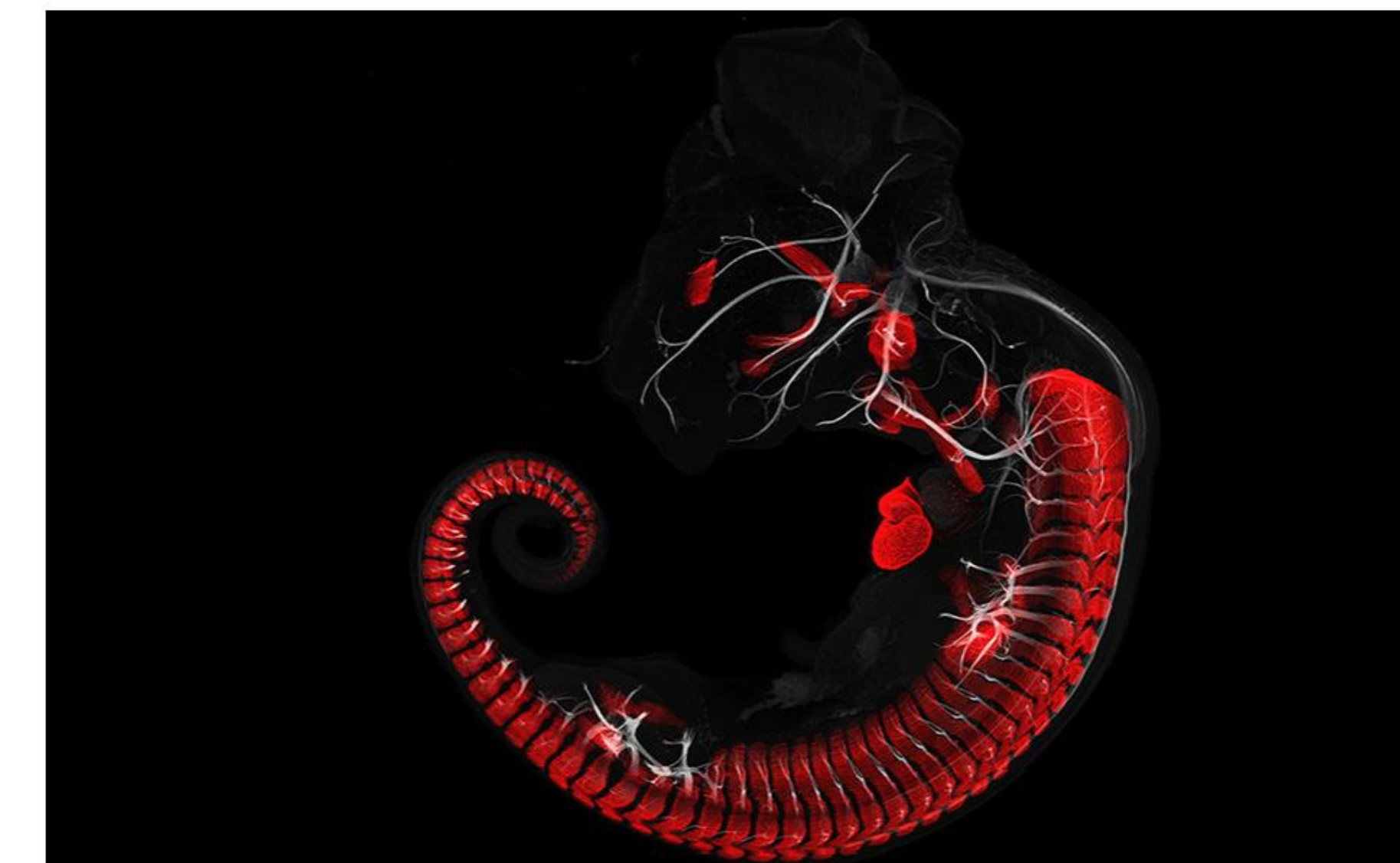


Yale Science Building and Kline Biology Tower

YaleNews EXPLORE TOPICS

Yale lab earns a top prize for its latest scientific visualization

By Jim Shelton | NOVEMBER 7, 2018



Daniel Smith, a graduate student in the Department of Geology and Geophysics, and [Bhart-Anjan Bhullar](#), assistant professor and assistant curator in geology and geophysics, have won a 2018 Vizzies People's Choice award for photography from the National Science Foundation (NSF).