

West Campus Analytical Core

Introduction:

The West Campus Analytical Core (WCAC) was launched in 2012 to provide the research community at West Campus with a comprehensive analytical instrumentation facility that provides access and training to a broad collection of shared instrumentation. The mission of the WCAC is to support and accelerate on-going research projects at both West and Main Campus and to provide suitable space for incremental additions of high-value shared instrumentation. Staff members train new users of instruments within the WCAC in one-on-one sessions. All users are required to demonstrate basic knowledge of instrument operation prior to unsupervised use of the instrument. Instrument usage is scheduled and monitored via a reservation website, time on the instruments is charged, which varies by the type of instrument and experiment.

People at the WCAC:



Terence Wu
Director, MS Services
phone:203-737-3254
terence.wu@yale.edu

Mousumi Ghosh, Ph.D.
Director, NMR Services
phone:203-737-2332
mousumi.ghosh@yale.edu



Kenneth Nelson, Ph.D.
Flow Cytometry Services
kenneth.nelson@yale.edu



Mass Spectrometry Instrumentation:



Agilent Qtof 6550



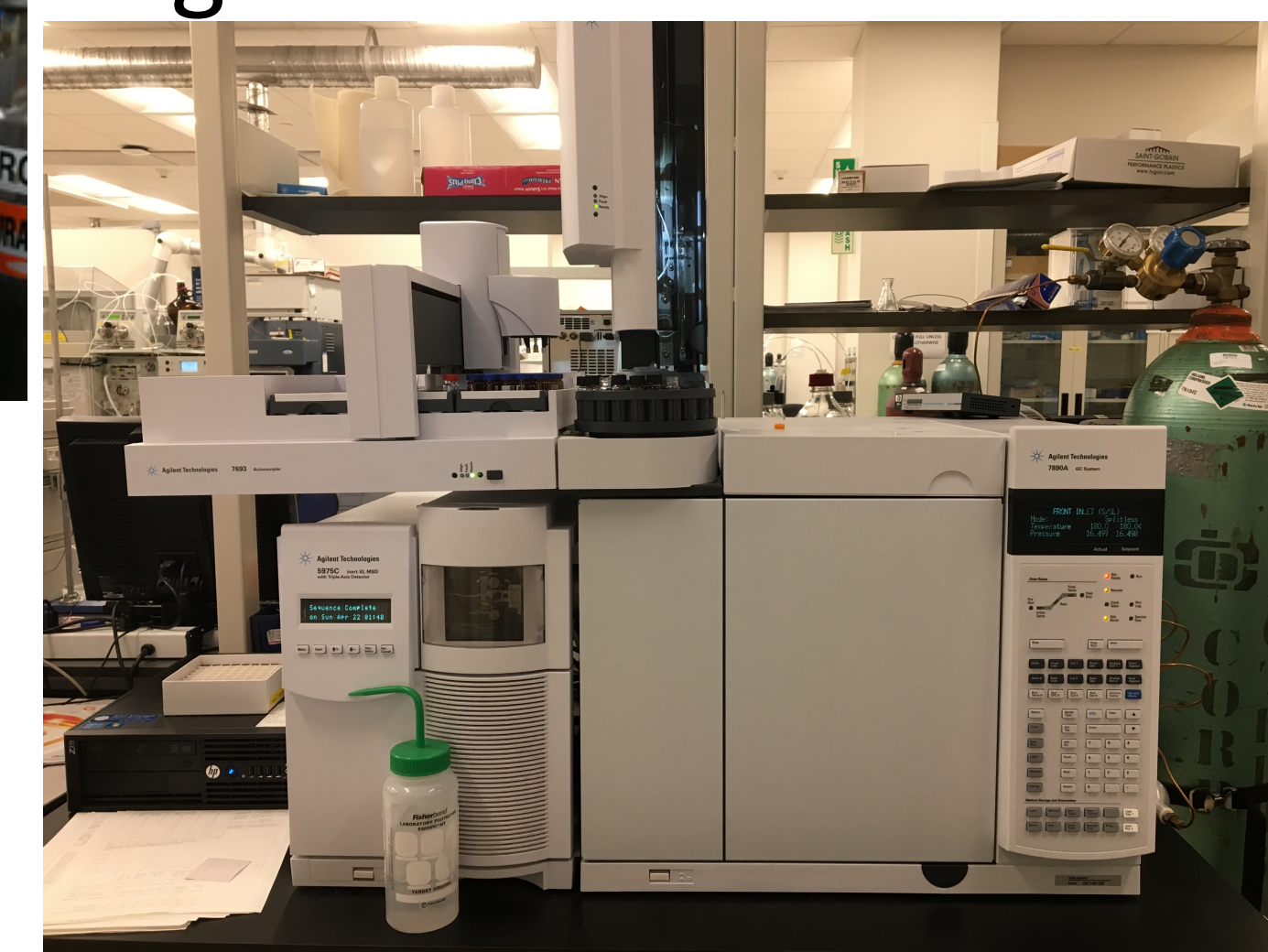
Agilent LCMS 6120B



Agilent 5975C GCMS



Agilent QQQ 6490



Location:



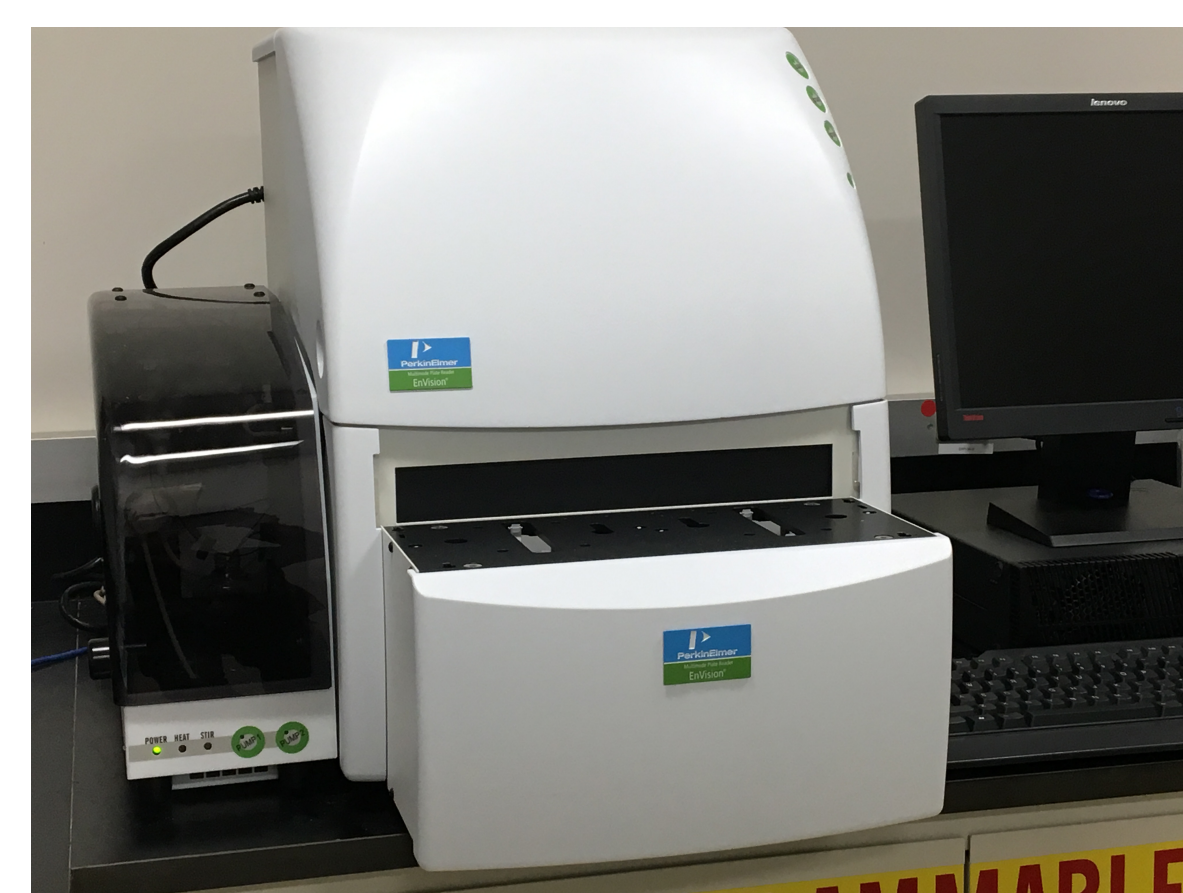
600 West Campus Drive, West Haven, CT06516

Selected 2018 Instrument Charges:

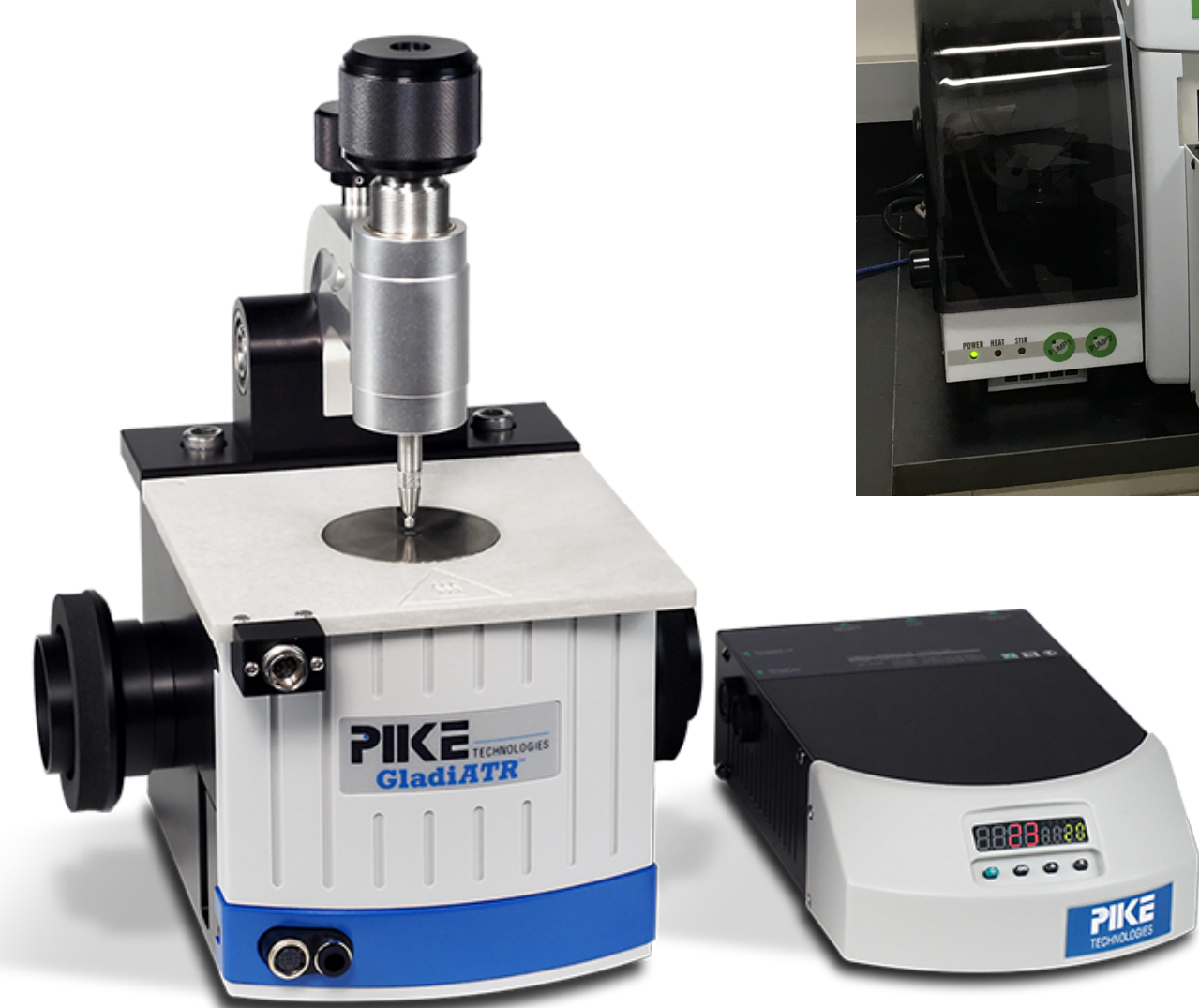
	Internal	Reservation
NMR_400 MHz	\$5/h	walkup
NMR_600 MHz	\$8/h	reservation
AG Q-LCMS	\$1/sample	walkup
AG GCMS	\$1/sample	reservation
AG QQQ/QToF	\$5/sample	reservation
Cytometry sort	\$24/h	reservation
Cytometry analysis	\$20/h	reservation
HPLC RP/Normal	\$1/sample	reservation
AG UV/Vis FTIR	\$5/h	walkup
PE Envision	\$20/h	reservation

Optical and Biophysical Instrumentation:

PE Envision Plate Reader

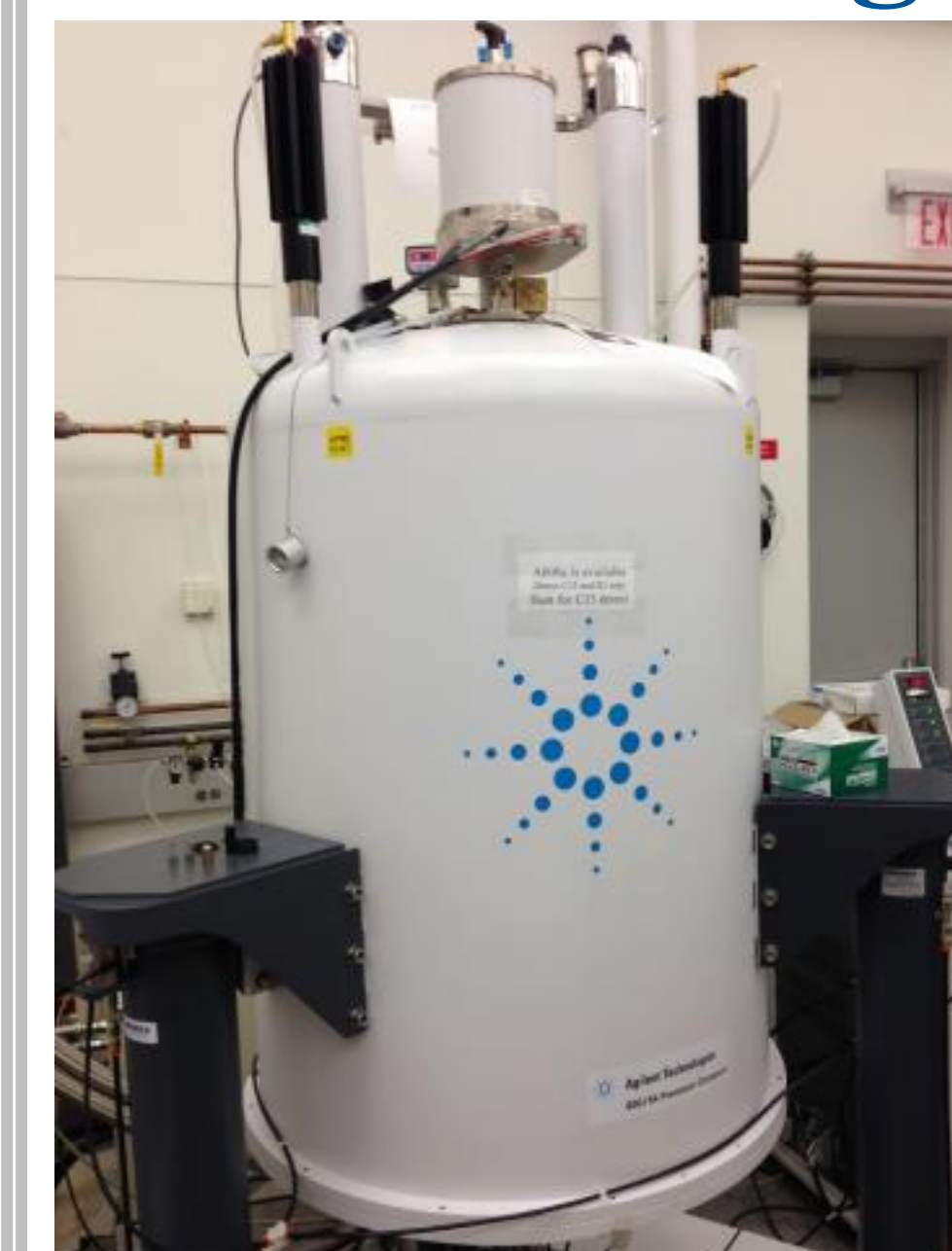


Cary UV-VIS 300



ATR (with CARY660 FTIR)

Nuclear Magnetic Resonance:



Bruker 400 MHz instrument; 5mm BB probe, 60 position AS

AG 600MHz NMR instrument with 3mm HCN cold probe

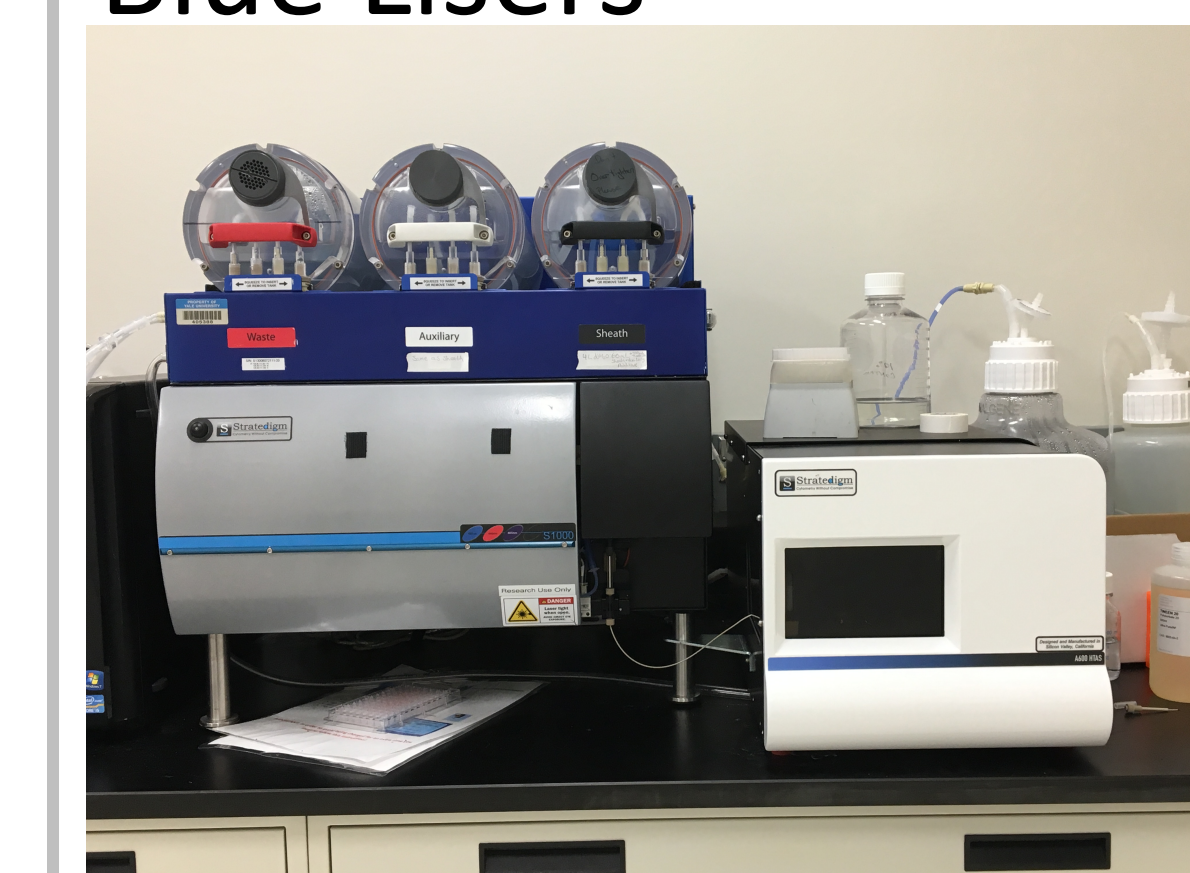


Flow Cytometry:



BD FACS Aria: Red, Blue and m-cherry lasers

BD FACS Verse: Red, Blue Lasers



Stratedigm S1000 with Red, Blue and UV laser HTAS A600 AS.