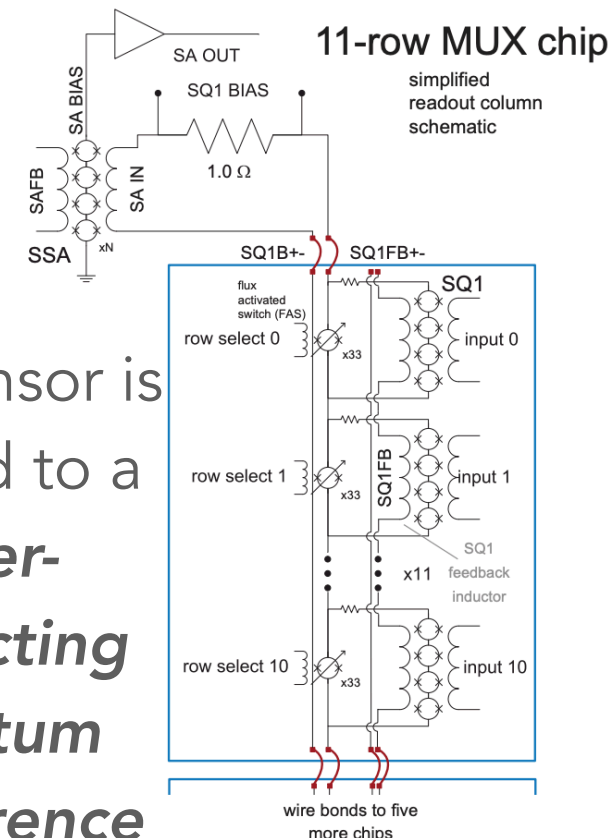


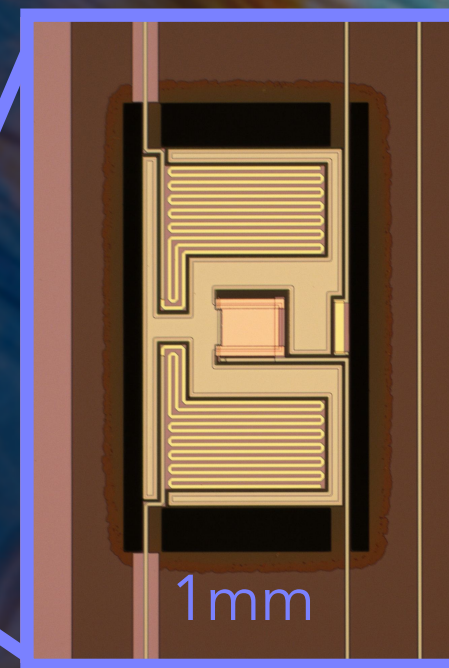
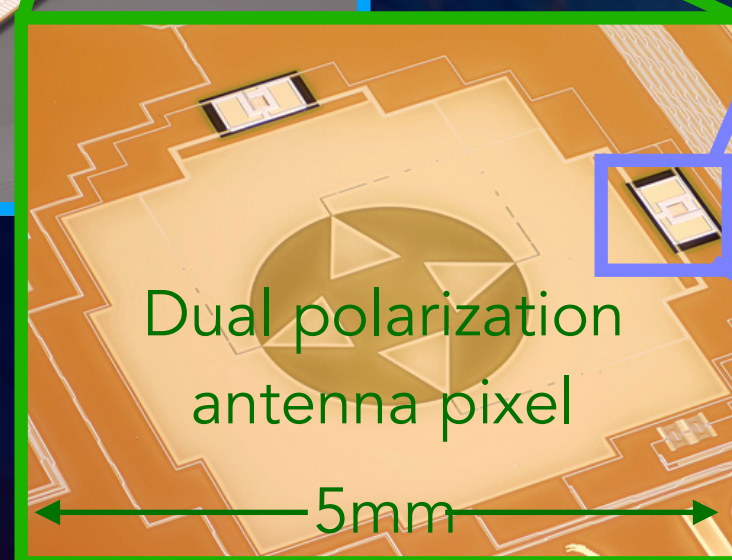
Atacama Cosmology Telescope (ACT): 6m dish located at 17,000 ft in Chile



Each sensor is coupled to a **Superconducting Quantum Interference Device (SQUID)** amplifier



ACTPol wafer cooled to 100mK in a Dilution Refrigerator. Current receiver has 3000 pixels (6000 sensors) on three 6" wafers



Superconducting Transition Edge Sensor